

## TECHNICAL CHARACTERISTICS

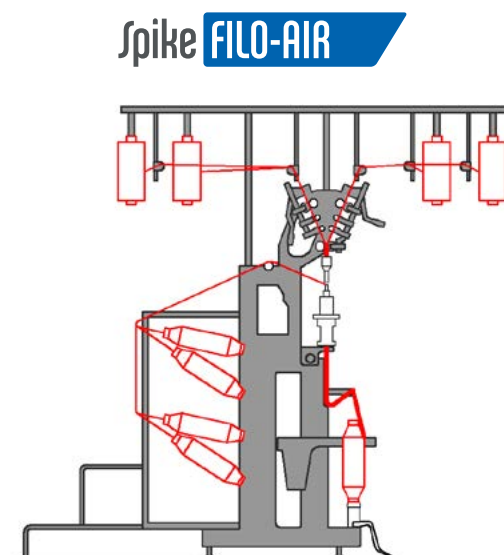
Version	<b>HP:</b> High production machine with motors inside the driving headstock.
Gauge	200 mm
Ring diameter	127 mm
Number of spindles	from 6 to 48
Bobbin height	450 mm
Max. length Max. width Max. height	8400 mm 2500 mm 2500 mm

**A different gauge and a different ring diameter can be considered.  
3-draft machines (ST3) have gauge 300 mm only.**

Gualchieri e Gualchieri reserve the right to modify the data in the tables without any notice in order to improve the machine performance.

## TECHNICAL PERFORMANCES

Max. draft (times)	999
Max. twists (tpm)	0-9999
Needle heads max. speed (rpm)	3500
Take-up ring spindles max. speed (rpm)	8800
Mechanical speed of core roller (m/min.)	185
Mechanical speed of feeding roller (m/min.)	185



Our SPIKEFILO-AIR has the ACIMIT Green Label Certification and it complies with INDUSTRY 4.0 ready.



## ENERGY G MONITORING

### Full control of production costs

Energy G MONITORING is a measuring system of the electricity. It allows to monitor in real time the actual machine energy cost for each yarn produced.

This system can be installed on any of our machine models upon request.

- ✓ Real time measuring of the energy used for each yarn
- ✓ Production history archive for data analysis
- ✓ It can be applied also on the existing machines

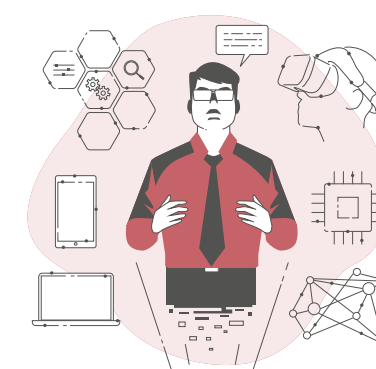


## YARN G QUALITY

### Maximizing the production, minimizing the operating costs

Yarn G QUALITY is an integrated software developed by us to program the detectors and manage the yarn breakages directly from the machine PC, without using external control units. The software helps to reduce the maintenance costs as well as the cost of the personnel in charge of the supervision on the machine.

- ✓ Saving of all the settings of the detectors in every yarn recipe
- ✓ Quality indicator of every yarn package according to the number of interventions registered
- ✓ It can be applied also on the existing machines



## YARN G LAB

### Your technician at your fingertips



Download now!



Yarn G LAB is an app created for all the technicians that are involved in the manufacture of fancy yarns. The App, that is free of charge and can be downloaded from any platform, features tools open to everybody as well as a reserved area for our customers with several additional functions.

- ✓ Useful conversion tool of the yarn counts and definition of its characteristics
- ✓ It helps the technician to develop new yarns
- ✓ Remote control on our machines from any device and from any location in the world through personal user name and password



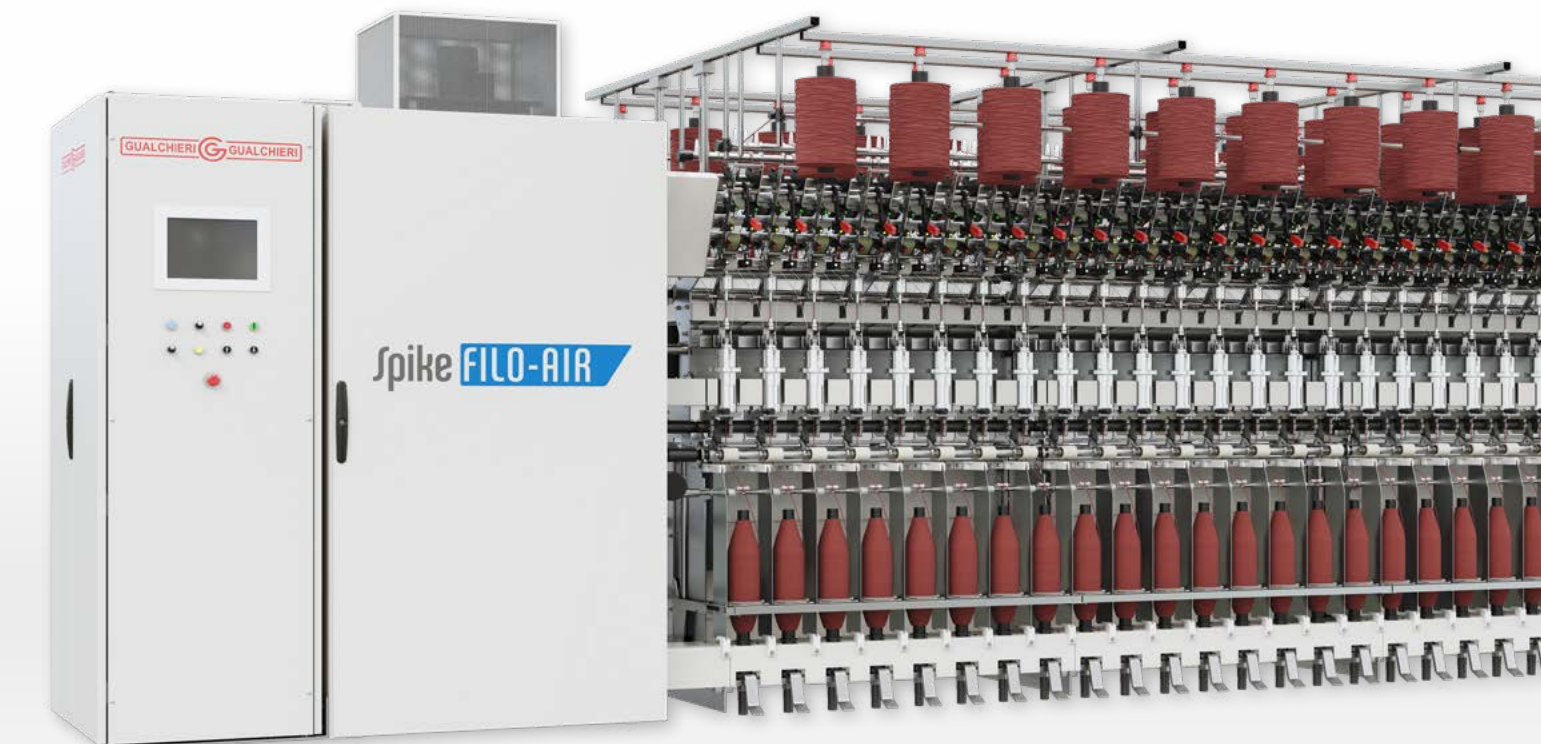
**WWW.GUALCHIERIEGUALCHIERI.IT**  
Via Nea Ionia, 43 - 59100 PRATO - ITALY  
Phone +39 0574 590587  
info@gualchieriegualchieri.it



# Spike FILO-AIR

The lightness of airjet softknit yarn

Fancy yarns - Special yarns



MADE IN ITALY SINCE 1973



# Spike FILO-AIR

THE LIGHTNESS OF AIRJET SOFTKNIT YARN

## MODALITÀ OPERATIVE

**Spike FILO-AIR** Needle head with air jet and take-up on bobbin

## DESCRIPTION

Our SPIKEFILO-AIR frame produces particularly soft and bulky AIRJET SOFTKNIT YARNS from roving (roving frame or finisher) by means of needle head with air jet and take-up on bobbin. The drafting group may feature one, two or three drafts and can process both short staple cotton fibers and long staple woollen fibers. Various types of needle heads are available to produce different kinds of yarns.

The mechanical ratios guarantee high feeding speeds. For this reason the machine is equipped with final yarn detectors that allow to protect the mechanical components in case of yarn breakages besides serving as a quality indicator of the yarn produced. The air jet device is produced with high wear resistance materials, is easy to clean and has been optimized for a reduced compressed air consumption. Our software manages the speeds of all the axes separately to guarantee the best setting of the needle heads.

## PRODUCTION FACILITIES

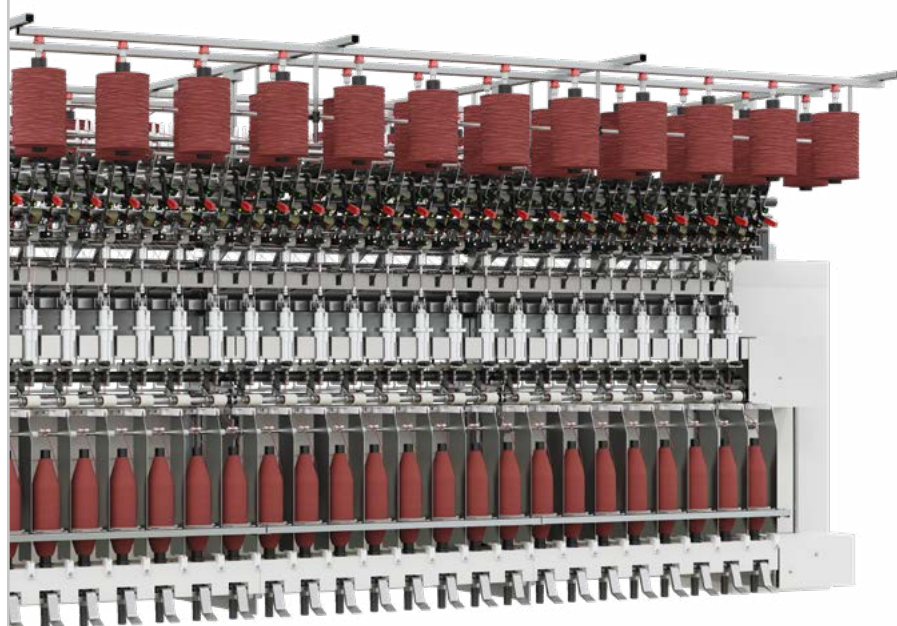
- Management software with simple and intuitive interface
- Yarn programmes and working modalities software-selectable
- Industry 4.0 ready
- Remote assistance that can be enabled directly from the machine PC
- Energy Recovery System for the optimization of the electrical consumption
- Energy G MONITORING for the real-time measurement of the electrical power consumption upon request

## TYPE OF YARNS

- Yarns for hand knitting
- Yarns for knitting

## OPTIONAL ACCESSORIES

- Injection bars
- Stop-motions for the core yarn



[WWW.GUALCHIERIEGUALCHIERI.IT](http://WWW.GUALCHIERIEGUALCHIERI.IT)



## FEEDING

- ST:** from roving
- ST1 (1 draft)
  - ST2 (2 drafts) suitable also for short fibres (cotton type)
  - ST3 (3 drafts)



## NEEDLE HEAD

- 1 working position
- 2 working positions



## RING SPINDLE

- Take-up bobbin



MADE IN ITALY SINCE 1973

