

## TECHNICAL CHARACTERISTICS

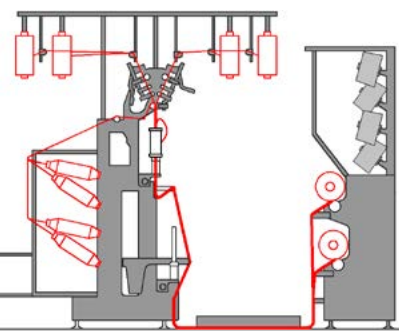
Version	HP: High production machine with motors inside the driving headstock.	EP: Flexible machine for small lots of yarns with motors on board the machine.	MODULAR: Modular machine made of independent sections (from 1 to 6) for the production of different yarns at the same time. Motors on board every single section.
Gauge	150 mm	150 mm	150 mm
Ring diameter	115 mm	115 mm	115 mm
Number of spindles	from 8 to 168	24	8 per section
Flanged bobbin height	220 mm	220 mm	220 mm
Bobbin height	450 mm	450 mm	450 mm
Cone traverse	6" - 8"	6" - 8"	6" - 8"
Max. length	2600 mm + No. of spindles x gauge	5350 mm	1250 mm + 1700 x No. of sections
Max. width	3450 mm	3500 mm	3500 mm
Max. height	2500 mm	2500 mm	2500 mm

A different gauge and different ring diameters can be considered as well as double side machines with single or double drive.  
Gualchieri e Gualchieri reserve the right to modify the data in the tables without any notice in order to improve the machine performance.

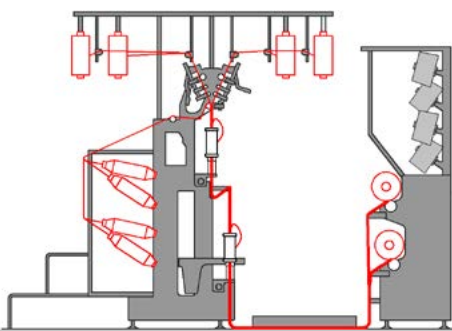
## TECHNICAL PERFORMANCES

Max. draft (times)	999	999	999
Max. twists (tpm)	0-9999	0-9999	0-9999
Hollow spindles max. speed with flanged bobbin (rpm)	13000	13000	13000
Hollow spindles max. speed with take-up bobbin (rpm)	8800	8800	8800
Final yarn count (Nm)	0,5 - 40	0,5 - 40	0,5 - 40

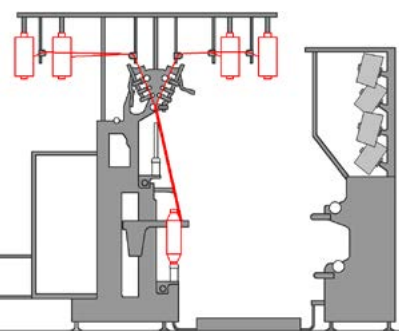
### Fanta ROC-FCI



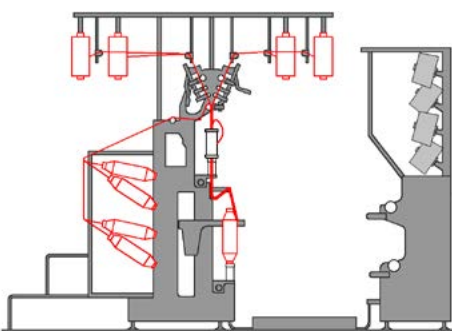
### Fanta ROC



### Fanta SPIN



### Fanta FILO



Our FANTAROC-FIL has the ACIMIT Green Label Certification and it complies with INDUSTRY 4.0 ready.



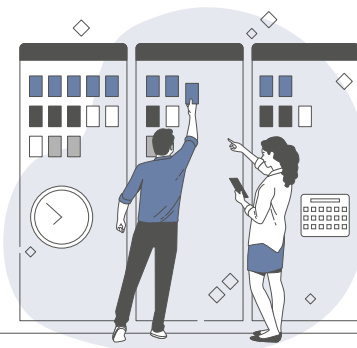
## ENERGY G MONITORING

### Full control of production costs

Energy G MONITORING is a measuring system of the electricity. It allows to monitor in real time the actual machine energy cost for each yarn produced.

This system can be installed on any of our machine models upon request.

- ✓ Real time measuring of the energy used for each yarn
- ✓ Production history archive for data analysis
- ✓ It can be applied also on the existing machines



## YARN G QUALITY

### Maximizing the production, minimizing the operating costs

Yarn G QUALITY is an integrated software developed by us to program the detectors and manage the yarn breakages directly from the machine PC, without using external control units. The software helps to reduce the maintenance costs as well as the cost of the personnel in charge of the supervision on the machine.

- ✓ Saving of all the settings of the detectors in every yarn recipe
- ✓ Quality indicator of every yarn package according to the number of interventions registered
- ✓ It can be applied also on the existing machines



## YARN G LAB

### Your technician at your fingertips



Download now!



Yarn G LAB is an app created for all the technicians that are involved in the manufacture of fancy yarns. The App, that is free of charge and can be downloaded from any platform, features tools open to everybody as well as a reserved area for our customers with several additional functions.

- ✓ Useful conversion tool of the yarn counts and definition of its characteristics
- ✓ It helps the technician to develop new yarns
- ✓ Remote control on our machines from any device and from any location in the world through personal user name and password



WWW.GUALCHIERIEGUALCHIERI.IT  
Via Nea Ionia, 43 - 59100 PRATO - ITALY  
Phone +39 0574 590587  
info@gualchieriegualchieri.it



# Fanta ROC-FIL

Many solutions in one single machine  
One machine: four working modalities

Fancy yarns - Special yarns



MADE IN ITALY SINCE 1973

# Fanta ROC-FIL

**MANY SOLUTIONS IN ONE SINGLE MACHINE**  
**ONE MACHINE: FOUR WORKING MODALITIES**

## WORKING MODALITIES

**Fanta ROC-FC1** One hollow spindle (one binding yarn) and take-up on external cone

**Fanta ROC** Two hollow spindles (two binding yarns) and take-up on external cone

**Fanta FILO** One hollow spindle and take-up on bobbin

**Fanta SPIN** Direct spinning bypassing the hollow spindle and take-up on bobbin

## DESCRIPTION

Our FANTAROC-FIL frame produces FANCY TWISTED YARNS and TECHNICAL YARNS from roving (roving frame or finisher), from sliver in cans and from yarn. The drafting group may feature one, two or three drafts and can process both short staple cotton fibers and long staple woollen fibers. To produce yarns from yarn (YARN TO YARN) there is a feeding creel on top of the external winding unit.

The highlight of this machine is its versatility due to the possibility of using several working modalities by leveraging and combining the two hollow spindles, the ring rail and the external winding unit. In fact by means of special adaptors developed by us it is possible to transform the bottom hollow spindle into a take-up ring spindle which makes the machine suitable for any production requirement. The external winding unit allows to reduce the length of the machine compared to a model with double hollow spindle and incorporated take-up cones. This machine model is produced by us for over 20 YEARS and it has been very successful since the beginning for its flexibility and for the wide range of yarns that can be produced on one single machine. Upon request it is possible to supply different types of needle heads to install in place of the hollow spindles to produce SPECIAL YARNS like TUBE YARNS, TUBE FILLED YARNS and AIRJET SOFTKNIT YARNS. The conversion is a simple and quick operation.

## PRODUCTION FACILITIES

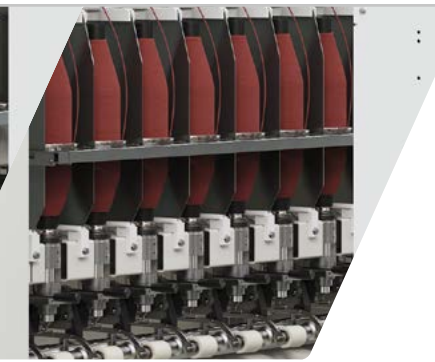
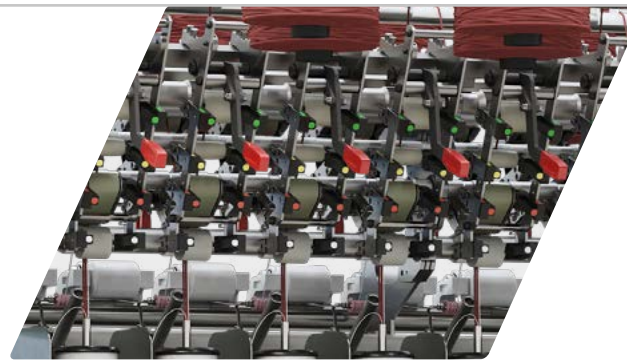
- Management software with simple and intuitive interface
- Yarn programmes and working modalities software-selectable
- Industry 4.0 ready
- Remote assistance that can be enabled directly from the machine PC
- Energy Recovery System for the optimization of the electrical consumption
- Energy G MONITORING for the real time measurement of the electrical power consumption upon request

## TYPE OF YARNS

- Yarns for hand knitting
- Yarns for knitting
- Yarns for weaving
- Yarns for apparel fabrics
- Yarns for upholstery fabrics
- Technical yarns
- Protech
- Mobiltech

## OPTIONAL ACCESSORIES

- Needle heads
- Air-jet application
- Injection bars
- Independently controlled false twist
- Final yarn detectors
- Stop-motions for the core yarn
- Creel from cans



## FEEDING

- FL:** from yarn
- ST:** from roving or sliver (creel from cans optional upon request)
- ST1 (1 draft)
- ST2 (2 drafts) suitable also for short fibers (cotton type)
- ST3 (3 drafts)

## 1<sup>ST</sup> HOLLOW SPINDLE

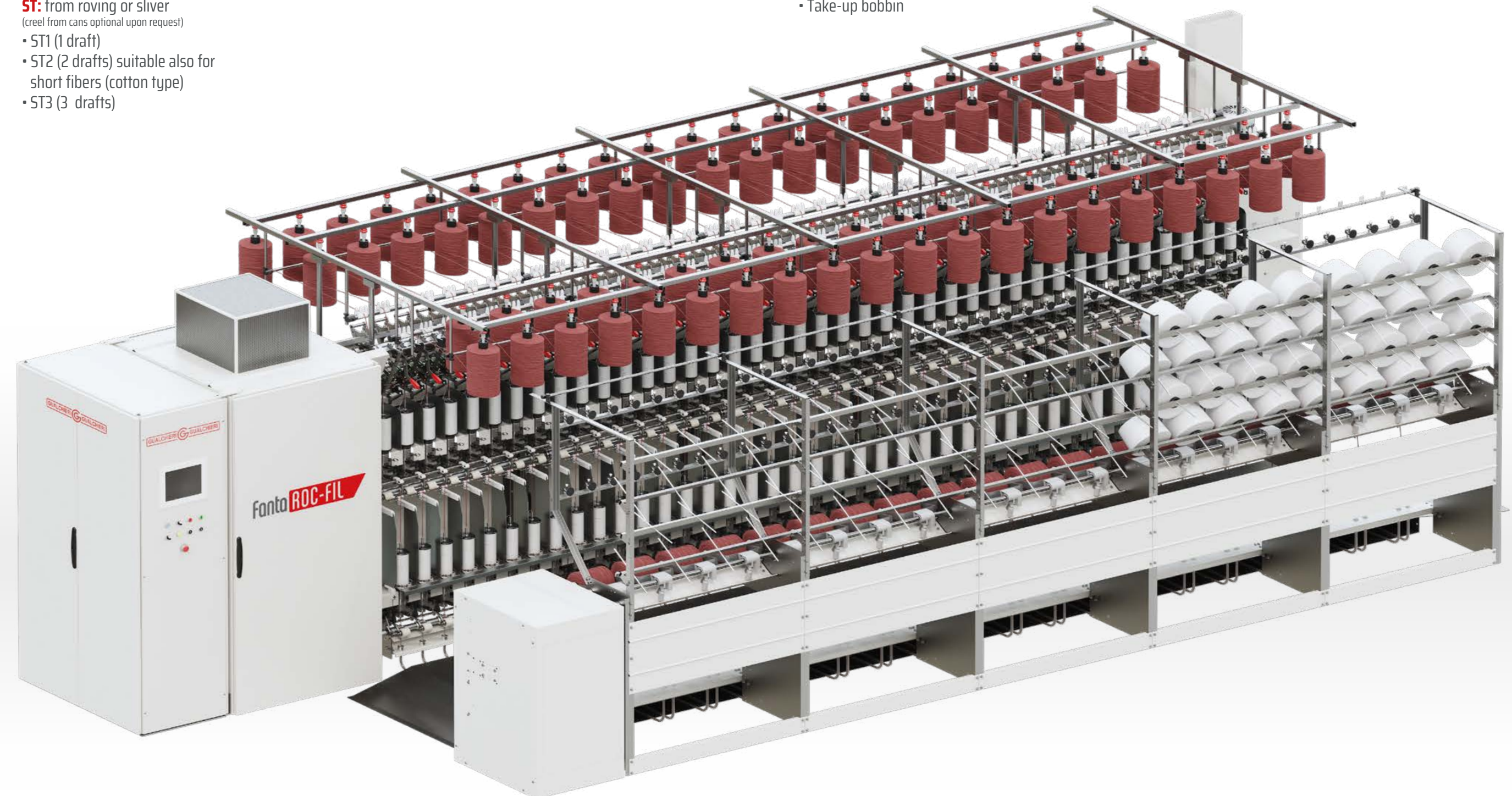
- Flanged bobbin for binding yarn

## 2<sup>ND</sup> HOLLOW SPINDLE

- Flanged bobbin for binding yarn
- Take-up bobbin

## EXTERNAL WINDING UNIT

- Take-up on cones placed on a double row



MADE IN ITALY SINCE 1973



[WWW.GUALCHIERIEGUALCHIERI.IT](http://WWW.GUALCHIERIEGUALCHIERI.IT)

